

PROFESSIONAL LEARNING



**EXPERT
SUPPORT** for
positive outcomes



Professional Learning

What if you could take one action that improves your team's satisfaction and increases student engagement? You can with n2y's Professional Learning! Like all n2y solutions, it's guided by the idea of an individualized journey, so each person can learn according to their own preferences. Use lessons from real-life experience and research-proven practices to boost long-term growth for educators and promote district performance. And whatever the environment, you and your team have choices, including self-paced online, and live webinar learning options.

IMPLEMENT QUICKLY AND EFFECTIVELY

Get the most from your investment, and support ongoing success.

PERSONALIZE LEARNING EXPERIENCES

Choose from individualized learning options to match any need or setting.

MAXIMIZE STUDENT OUTCOMES

Apply research-based practices for helping students to realize their potential.

IMPLEMENT quickly and effectively

Using n2y solutions is a proven way you can make a significant impact on the lives of students! Educators can get started quickly with each solution thanks to built-in support and expert advice on n2y.com.

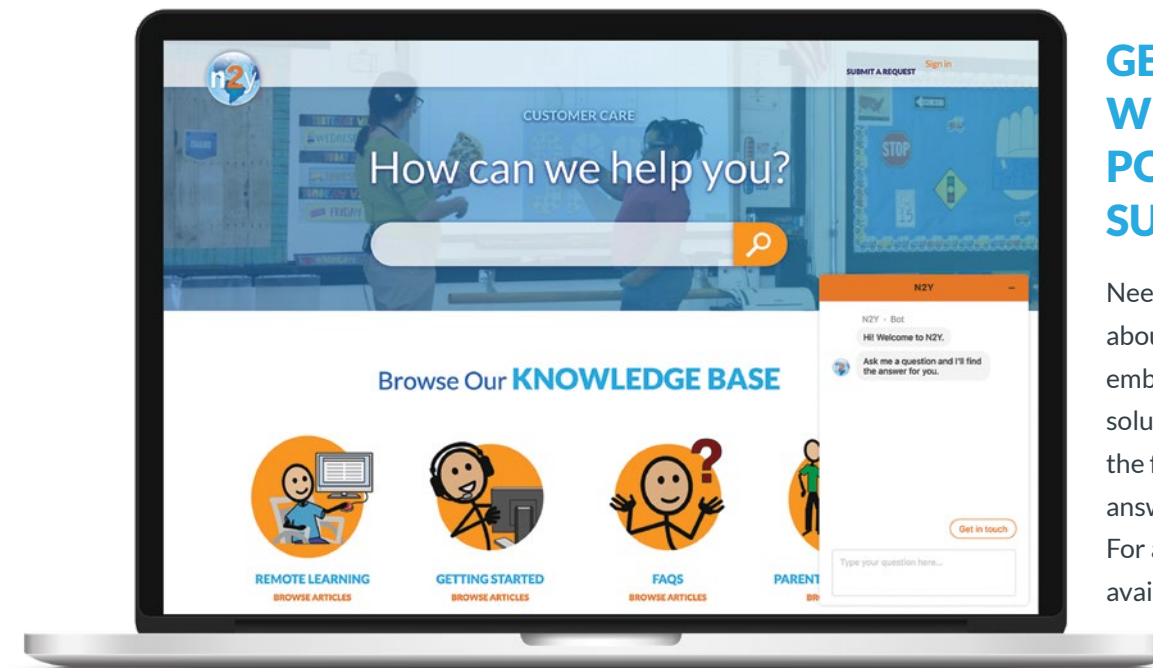
GAIN CONFIDENCE WITH THE FOUNDATIONS LEARNING PATHWAY

Included with every solution subscription, the Foundations Learning Pathway offers a brief overview of how the solution works so that educators know where to start. This set of self-paced online courses also provides key information to administrators. It comes with a certificate of attendance and badge after completion.

ENSURE INITIAL FIDELITY WITH SMART START LEARNING PATHWAYS

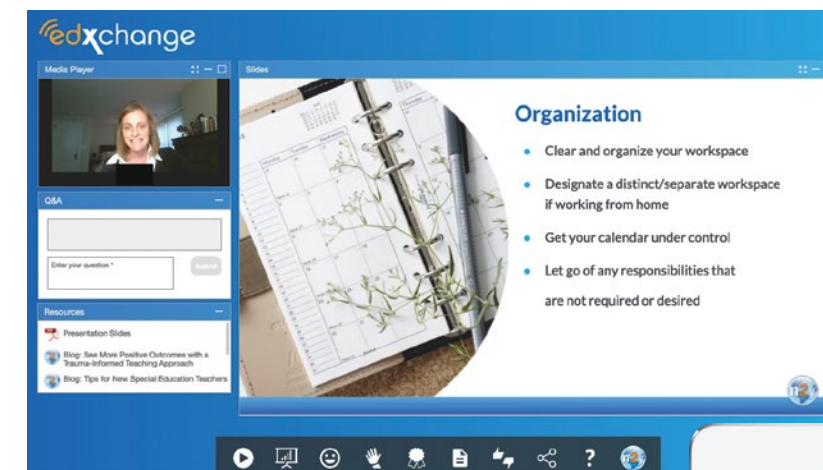
Start helping students learn right from day one!

Every solution subscription and renewal comes with the Smart Start Learning Pathway, which details how busy educators can quickly personalize and implement their solution. After completing the self-paced online training, join a live virtual working session to get any remaining questions answered.



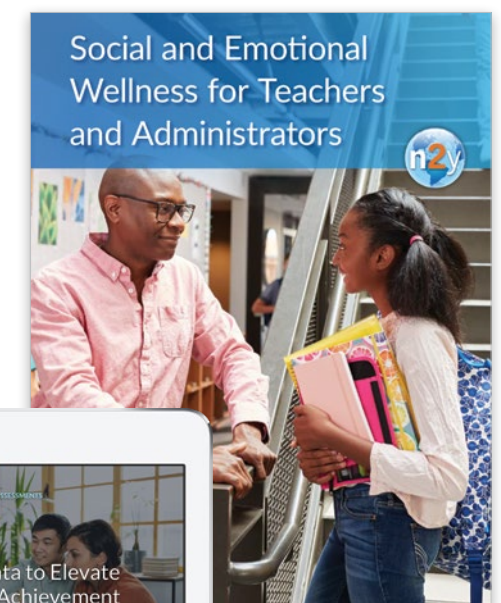
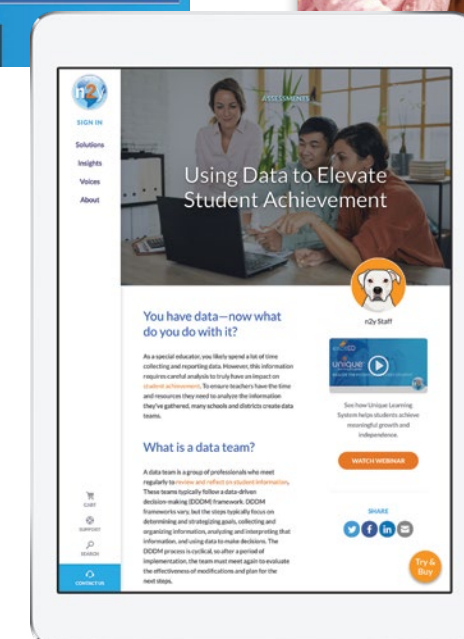
GET FAST ANSWERS WITH ROBUST POINT-OF-USE SUPPORT

Need a quick answer to a question about an n2y solution? Help is embedded at point of use in every solution, giving you 24/7 access to the full Knowledge Base with detailed answers and clear step-by-step videos. For additional support, a live chat is available during business hours!



DISCOVER BEST PRACTICES

Check out the Insights section on n2y.com to find practical tips and strategies from experts that teachers and service providers can use immediately. Take a deeper dive into trending topics in special education with free live and on-demand webinars. And explore even more with impeccably researched white papers, guides, and timely blog articles covering a wide range of subjects—all available 24/7!



PERSONALIZE learning experiences

An individualized journey is foundational to every n2y solution and every professional learning experience. Choose from options to support any person, team, or situation in your district, or partner with a Professional Learning Specialist to create a one-of-a-kind learning experience.

BUILD CAPACITY WITH ESSENTIALS LEARNING PATHWAYS

Successfully implement your solution and discover the best ways to maximize your instructional time and understanding through our Essentials Learning Pathways. Train your entire district at once with an interactive webinar (up to 40 participants), or allow individuals to work at their own pace through an online pathway that records their progress.

n2y TOTAL SOLUTION

Confidently synthesize all n2y solutions and maximize learning for students by incorporating instruction in the areas of academics, current events, symbol-supported communication and activities, high-interest skill practice, and effective behavior support.

UNIQUE LEARNING SYSTEM

Learn to implement differentiated instruction to meet the needs of all students and utilize data to further support IEP development and/or transition plans.

POSITIVITY

Grasp the basics of behavior, explore the development and delivery of evidence-based strategies, and see how Positivity® automatically tracks data to support classroom management while empowering students' emotional control, executive functioning, and self-regulation.

POLARIS

Gain the knowledge to create personalized, data-driven IEPs (roadmaps) through four stages: Plan, Write, Execute, and Report. Discover how easy and essential collaboration is while taking a whole-student approach. Help teams maintain compliance from start to finish.



DISCOVER TIME-SAVING DETAILS WITH ESSENTIALS PRO LEARNING PATHWAYS

After completing our Essentials Learning Pathways, educators can take their expertise to the next level by exploring advanced topics in Essentials Pro Learning Pathways. These are available as interactive webinars for up to 40 participants driven by a Professional Learning Specialist or an online, self-paced pathway. All participants who pass the exam will be awarded a badge and n2y Certified Educator status.

n2y TOTAL SOLUTION

Take a deeper dive into analyzing data for all n2y solutions, determining academic and behavioral progress and learning how to integrate all solutions into daily instruction.

UNIQUE LEARNING SYSTEM

After a brief review of the Essentials Learning Pathway for Unique Learning System®, learn more about daily instruction and explore additional resources to support the use of data and differentiated instruction for individualized learning.



MAXIMIZE YOUR INVESTMENT WITH n2y COACH LEARNING PATHWAY

Learn how to best apply teachers' talent, energy, and content knowledge and support their career growth. In this 3- to 4-day course, district leads will learn to train others to fully use Unique Learning System in order to meet the individual needs of all students and improve outcomes. Educators should be Essentials Learning Pathway certified and will be awarded a badge and n2y Certified District Coach status upon passing the exam. An n2y Certified District Coach may only provide training in the district where employed and may not charge for services in any district. This Learning Pathway is an interactive webinar for up to 20 participants driven by a Professional Learning Specialist.



MAXIMIZE student outcomes

When educators learn to fine-tune their expertise with n2y's Total Solution, they're perfecting the many ways of supporting the whole child—meeting academic, social-emotional, and communication needs. They learn best practices and gain insights to spark greater achievement, help students connect with their communities, and support proud parents and caregivers.

LEARNING THROUGH UNIVERSAL BEST PRACTICES

Professional learning at n2y is 100% aligned not only to ESSA's definition of professional learning but also to Learning Forward's Seven Standards for Professional Learning: learning communities, leadership, resources, data, learning designs, implementation, and outcomes. These standards have been proven to lead to effective teaching practices, supportive leadership, and improved student results.

TAILOR YOUR PROFESSIONAL LEARNING WITH CUSTOM LIVE WEBINARS

Create your own specialized professional learning experience by collaborating with an online Professional Learning Specialist to develop an hour-long webinar around Polaris®, Unique Learning System, Positivity, News2you®, SymbolStix PRIME®, or L³ Skills®. Custom Live Webinars can be attended by up to 40 participants, and a maximum of two hour-long webinars can be scheduled per day.

SUPPORT STUDENTS AT ALL LEVELS WITH TARGETED LIVE WEBINARS

Whether you want hands-on guidance in getting started with a solution or in exploring wider topics to help your team become more efficient and effective, our Professional Learning Specialists are ready! Join them for a live one- or two-hour webinar for up to 40 participants. A maximum of two hour-long webinars can be scheduled per day. Please note that this webinar series does not provide a certification.

CHOOSE FROM THESE TOPICS

- 1. Implementing Effective Instruction** 1-hr | 2-hr
Explore the guiding strategies in your n2y solutions for effectively delivering instruction using the differentiated, standards-aligned content.
- 2. Instructional Planning with Teacher Dashboard** 1-hr | 2-hr
Learn how to create personalized lesson plans in Unique Learning System that reflect your daily schedule; create a My Plan to receive automated lesson plans and deliver differentiated interactive lessons to students.
- 3. Using Data for Planning and Monitoring** 1-hr | 2-hr
Explore how the assessments in n2y's GPS help you monitor monthly skills and yearly progress and learn the power of Student Daily Performance data to drive instruction, demonstrate growth, and support compliance documentation.
- 4. Differentiating Instruction for Level 1, 2, and 3** 1-hr | 2-hr
Discover the supports and strategies within Unique Learning System's monthly lessons and identify the differentiation levels in the activities and materials. Explore tools in the embedded Instructional Guides for added student supports.
- 5. Building Transition Plans and Supports** 1-hr | 2-hr
Learn to use dedicated tools and assessments in Unique Learning System to develop effective transition plans and discover activities for building students' transition readiness skills.
- 6. Introduction to News2you & L³ Skills** 1-hr | 2-hr
In News2you, navigate to Current Issues and Breaking News articles that will increase students' connection to the world, and explore enrichment activities for building conversation, engagement, and interaction throughout the day. In L³ Skills, learn the ease of searching and assigning educational games that match student ability levels, interests, and age ranges to provide appropriate skills practice in a safe, immersive environment.
- 7. Introduction to SymbolStix PRIME** 1-hr | 2-hr
Learn how to easily search, save, and organize symbols and collections in SymbolStix PRIME and use the Board Wizard to create customized language and communication activities that will promote student engagement, learning, and self-expression.
- 8. Data Interpretation and Data Analytics** 1-hr | 2-hr
Explore how the data assessment tools in the Total Solution support analyzing and interpreting reports to guide data-driven decisions that will help you meet student learning objectives and facilitate conversations with parents.
- 9. Literacy Strategies for Unique Learners** 1-hr | 2-hr
Take advantage of evidence-based practices and resources within Unique Learning System to develop effective literacy instruction that will build unique learners' reading skills.
- 10. Start the Year Strong with ULS Essential Tools** 2-hr
See how to streamline the first few weeks of the school year by setting up student access to solutions and preparing to teach using My Schedule, My Plan, and Monthly Lessons. Discover the value of completing Observational Profiles and monitoring data for personalizing instruction.
- 11. Set Up a Smooth Transition by Ending the Year Right!** 2-hr
Learn how analyzing assessment data can inform IEPs and end-of-year checklists can support a successful new school year. Explore how to extend learning by planning and preparing for ESY and other summer programs with our Total Solution activities and materials.

SPRING
2022

n2y Professional Learning Opportunities

FOUNDATIONS LEARNING PATHWAY included with subscription

SMART START LEARNING PATHWAYS included with subscription

ESSENTIALS LEARNING PATHWAYS

N2Y TOTAL SOLUTION	UNIQUE LEARNING SYSTEM	POSITIVITY	POLARIS
Interactive Webinar \$3,250 per facilitator (40 participants max)	Interactive Webinar \$3,250 per facilitator (40 participants max)	Interactive Webinar \$3,250 per facilitator (40 participants max)	Interactive Webinar \$3,250 per facilitator (40 participants max)
Online \$99 per user	Online \$99 per user	Online \$99 per user	Online \$99 per user

ESSENTIALS PRO LEARNING PATHWAYS

N2Y TOTAL SOLUTION	UNIQUE LEARNING SYSTEM
Interactive Webinar \$3,250 per facilitator (40 participants max)	Interactive Webinar \$3,250 per facilitator (40 participants max)
Online \$149 per user	Online \$149 per user

N2Y COACH LEARNING PATHWAYS

SPRING 2022

N2Y TOTAL SOLUTION	UNIQUE LEARNING SYSTEM
Interactive Webinar \$7,680 per facilitator (20 participants max)	Interactive Webinar \$7,680 per facilitator (20 participants max)

TARGETED LIVE WEBINARS

1-hour \$299 per webinar (40 participants max)	2-hour \$499 per webinar (40 participants max)
--	--

Please note that the webinar series does not provide a certification, and a maximum of two hours per day (covering one or two topics) can be scheduled.

CUSTOM LIVE WEBINARS

\$750 per webinar
(40 participants max)

Please note that webinars are one hour and a maximum of two hour-long webinars can be scheduled per day.

Explore more at n2y.com/professional-learning

Stay Informed with Free Webinars

From tips on maximizing your n2y solution to trending topics in special education, these webinars will keep you progressing on your own individual learning pathway!



Master specific features of n2y solutions and get your questions answered in real time.

Join presentations from experts in the field and stay on top of timely and trending topics for special educators.

Watch free webinars at n2y.com/webinars

*“Our training...was absolutely awesome!
My staff members were engaged
throughout the day. I truly felt that people
did NOT have questions when they left...
I was very impressed and am very grateful.*

Denise Boyle

SPECIAL EDUCATION SUPERVISOR
SAN ANGELO INDEPENDENT SCHOOL DISTRICT, TX



Digital **SIMPLICITY.**
Data-driven **EFFICACY.**

n2y's Total Solution connects the entire educator team with integrated tools that empower them to plan, teach, assess, report, and reach students across every in-school or remote setting.

Schedule a demo at n2y.com/demo

EVERYONE Can Learn®
800.697.6575 • n2y.com

Copyright © n2y, LLC. All rights reserved.

