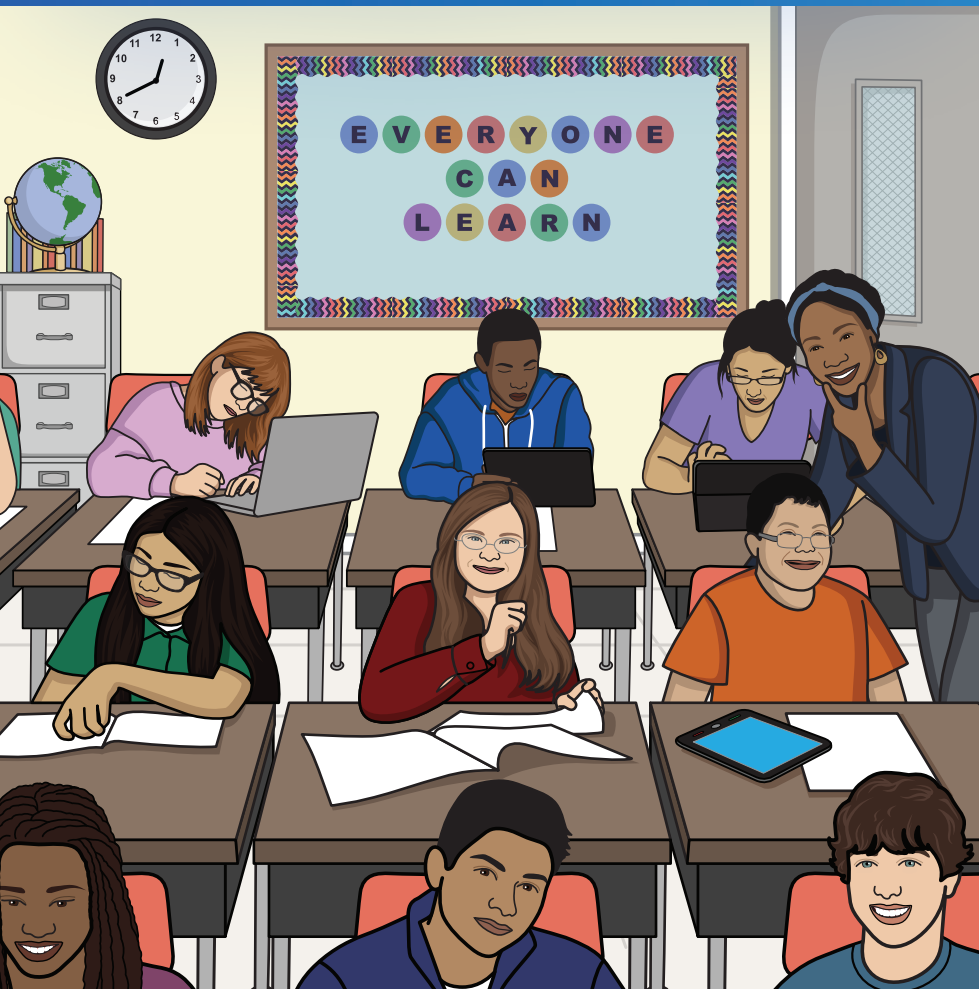


THE TOTAL SOLUTION

for unique learners





WHY the n2y Total Solution?

Because we believe everyone can learn, and every student has the right to realize their full potential.

For more than 20 years we've helped transform the lives of hundreds of thousands of unique learners throughout their individual journeys, reaching them wherever they are learning. Addressing the diverse needs of the entire IEP team—including families and caregivers—the Total Solution engages the whole child with research-based, data-driven instruction, guidance, and supports for both academic and personal growth.

INCREASE EDUCATOR SATISFACTION

A complete ecosystem of research-based instruction and support for unique learners eases the daily demands of educators, allowing them to do what they do best: teach and move students forward!

DEMONSTRATE AND MAINTAIN COMPLIANCE

Powerful tools for instruction, assessment, and collaborating on IEPs are driven by easy access to automated data, analysis, reporting, and suggested actions, ensuring compliance at the individual, school, and district level.

DRIVE POSITIVE STUDENT OUTCOMES

All-encompassing IEP support, differentiated academic instruction, and behavior management gives students meaningful access to their state's standards, as well as more opportunities in life beyond school.

ENHANCE PARENT COLLABORATION

Increased communication and transparency encourage direct family involvement with their child's IEP goals and progress, and help to build a culture of trust.

Rely on a complete ECOSYSTEM OF SUPPORT

The research-, evidence-, and standards-based Total Solution seamlessly integrates innovative components that empower educators to teach and students to achieve.



AWARD-WINNING COMPONENTS INCLUDE:

- Personalized guidance for student growth and compliance with Polaris™
- Complete standards-based pre-K–transition instruction with Unique Learning System®
- Comprehensive behavior management with Positivity®
- Meaningful current events with News-2-You®
- Essential symbol communication with SymbolStix PRIME®
- Interactive skills practice with L³ Skills®

All supported by a universal online LEARNING PLATFORM

The technology works seamlessly with the systems you currently use and is completely adaptable to what you'll have in the future. The cloud-based content and features help you reach your students no matter where they learn throughout the day.



SHARED COMPUTER MODEL

Access lesson plans, activities, symbols, and strategies and print PDFs for instruction.



INTERACTIVE MODEL

Display lessons and activities for differentiated groups and enable interactivity on your whiteboard.

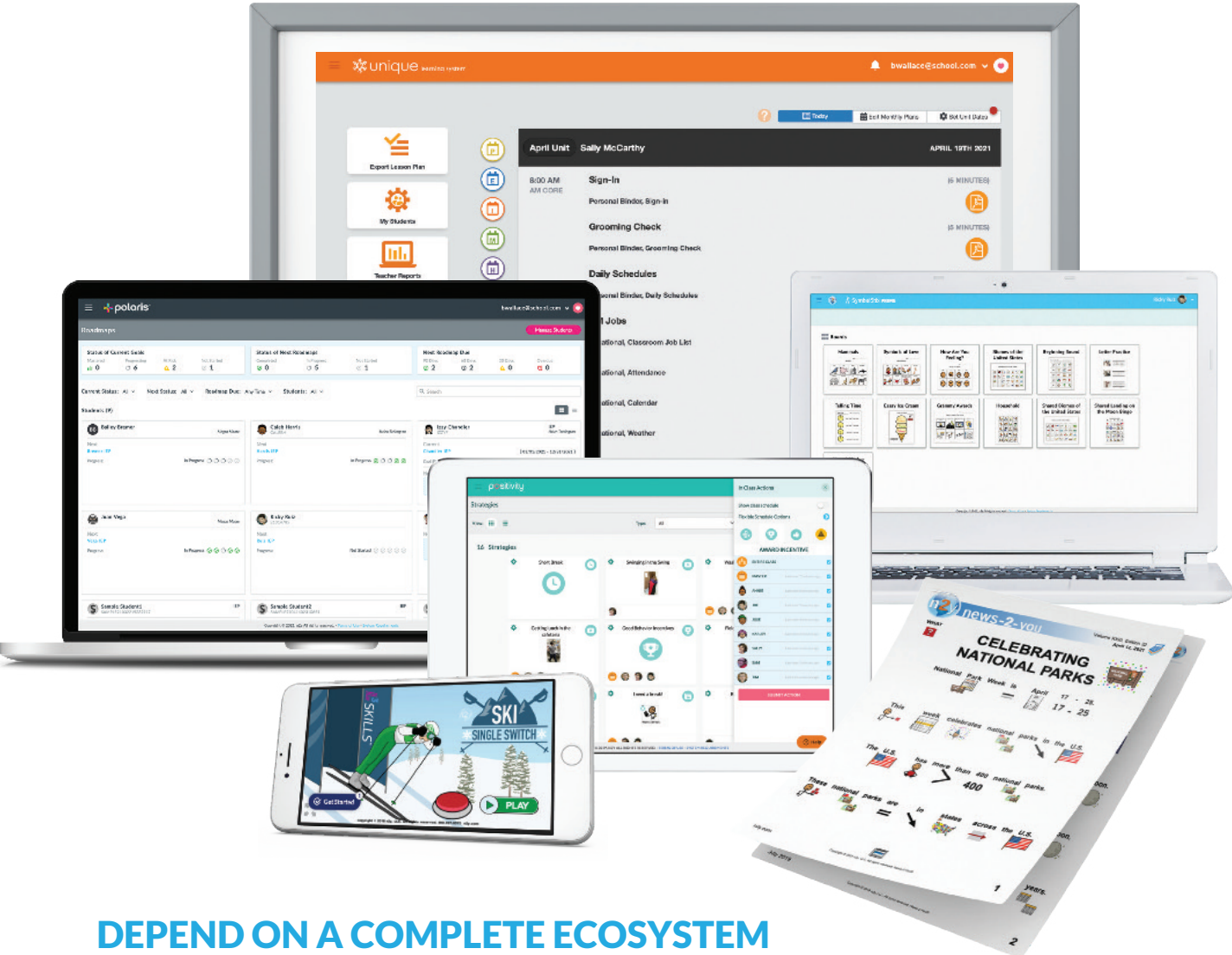


1:1 MODEL

Combine whole-group instruction with easy delivery of differentiated content directly to students' devices.

Increase educator SATISFACTION

Less time planning, doing paperwork, and coordinating with the rest of IEP team means more time with students, more growth, and more job satisfaction. It's all possible!

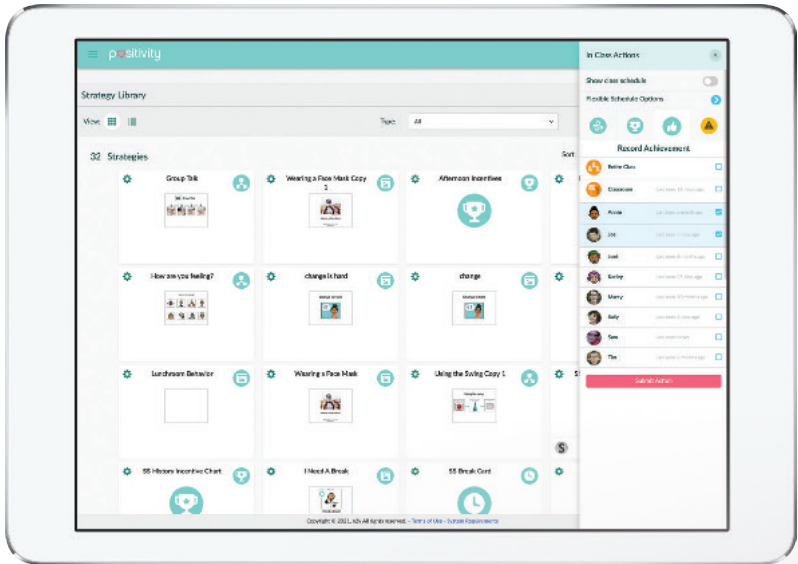
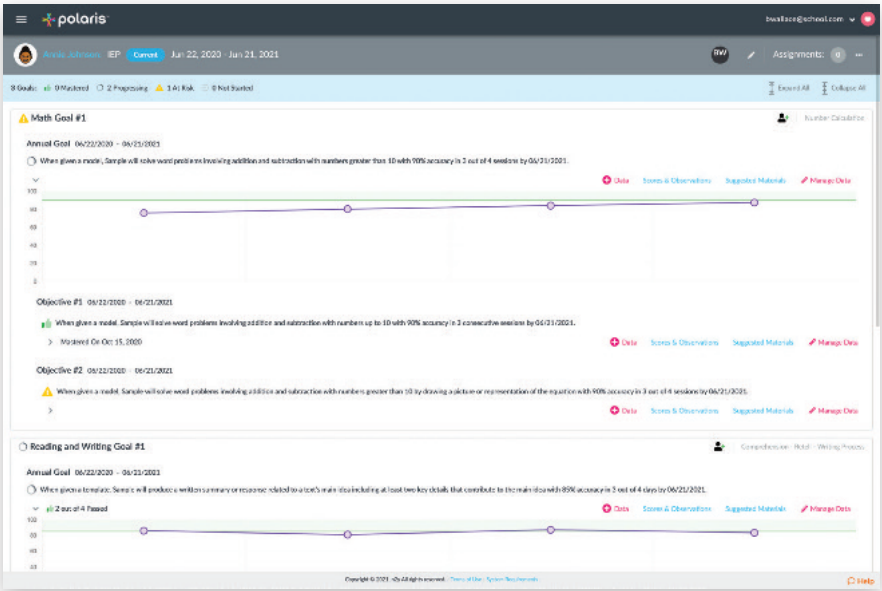


DEPEND ON A COMPLETE ECOSYSTEM OF INSTRUCTION AND SUPPORT

You can rely on interconnected solutions that provide complete instruction for reaching state standards and beyond with differentiated daily lessons, comprehensive assessments, complete behavior management and intervention, engaging skills practice, powerful communication tools, and current events content that connects students to the world.

SAVE TIME WITH DATA-INFORMED RECOMMENDATIONS

It's easy to monitor integrated academic, behavior, and skills progress from one centralized location. You'll also receive automated recommendations for teaching resources and materials to support progress toward IEP goals and to prepare students for state testing.



STREAMLINE YOUR DAY

The Total Solution frees you from many important—but exhaustively time-consuming—daily tasks. Quickly set up class schedules, automate daily lesson planning and progress monitoring, access point-of-use standards alignment, document compliance, assign homework, use pre-existing communication templates, and much more.

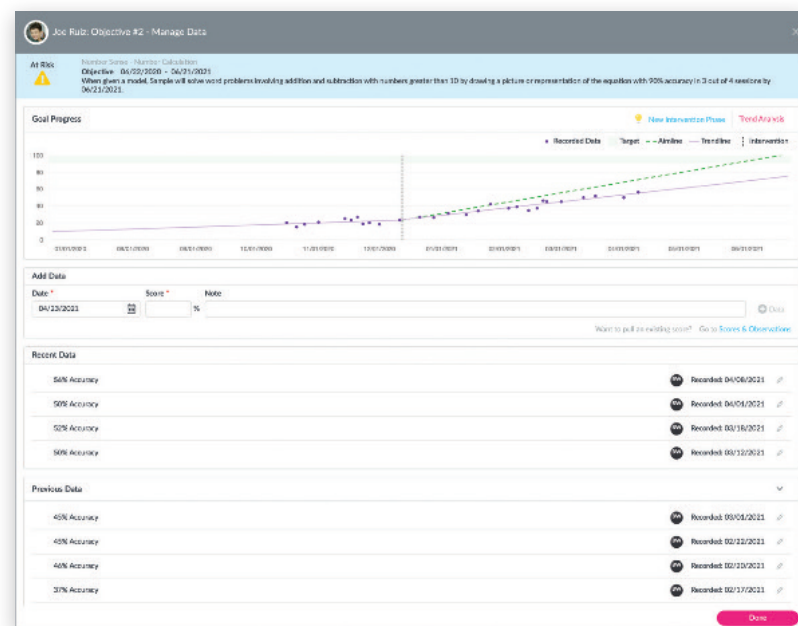
TEACH AND LEARN ANYWHERE

No time-consuming downloads or worries about compatibility—you can teach, and students can learn, anywhere there's an internet connection and a device to connect.



Demonstrate and maintain COMPLIANCE

End-to-end collaborative, automated IEP development and implementation—plus standards-aligned instruction and a full range of assessments, data collection, and reporting options—ensure compliance and fidelity at every level.

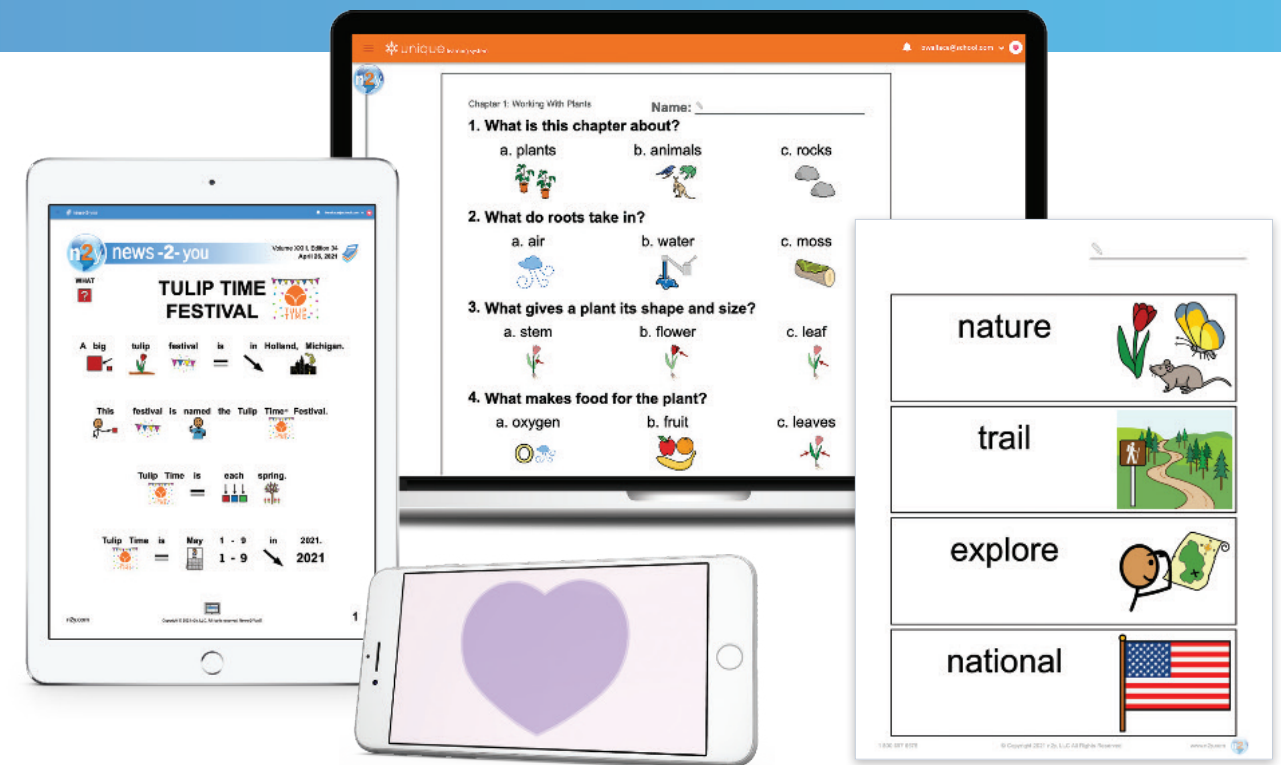
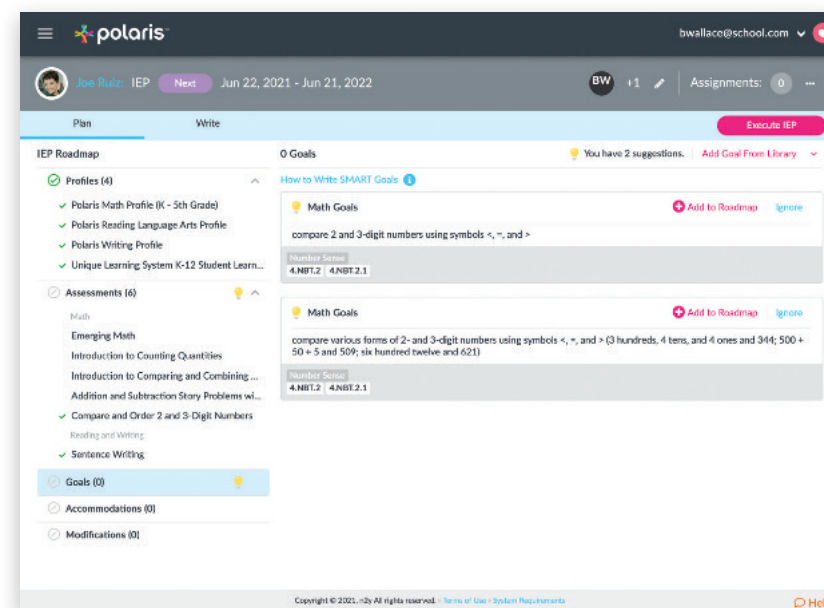


RELY ON DATA

Data drives the Total Solution! You can easily demonstrate ESSA and IDEA compliance, and access key IEP documentation to show the status of roadmaps, assessments, associated performance data, and recommended instructional supports, and ultimately to demonstrate student mastery and team compliance at every stage.

SAVE WEEKS OF VALUABLE TIME

The entire stakeholder team can collaborate seamlessly to build student IEPs and manage compliance at every stage, from planning and writing through execution and reporting.

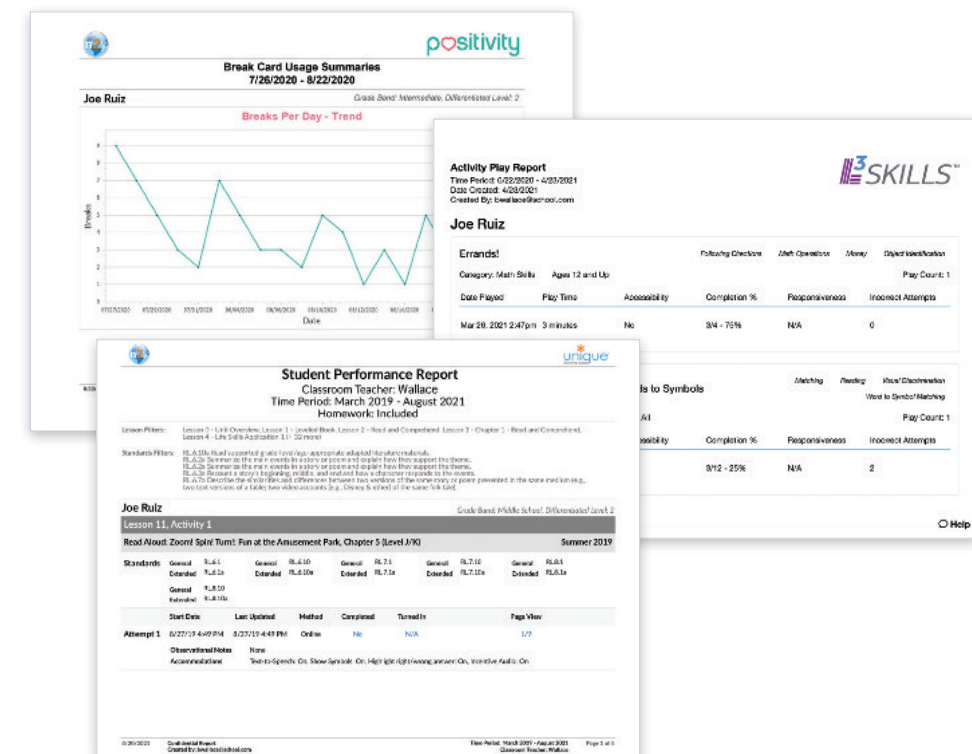


ENSURE PROGRESS TOWARD INDEPENDENCE

Education is ultimately about growth. Students master both academic standards and behavior and life skills through award-winning content that enriches and supports all aspects of a successful learning environment: engagement, communication, literacy and math mastery, self-regulation, transition skills, and ultimately a path to independence.

CREATE A CULTURE OF TRUST AND COLLABORATION

When all of the stakeholders—including parents—have the reports, data, and digital portfolios in advance of the IEP meeting, the valuable time together can be used to discuss opportunities for improvements.



Drive positive student OUTCOMES

Augmenting your teaching expertise with the Total Solution’s academic, behavior, skill-building, communication, and enrichment content gives you all the tools for putting your students on clear paths for achievement in school and opening the door to greater possibilities in adult life.

Electricity Exhibit, Plant Exhibit, Rock Exhibit, gift shop, Space Exhibit, lobby, Dinosaur Exhibit, Ryan is visiting the science museum with his class. Find the orange, Ryan is visiting the science museum with his class. 1. Choose the shapes that outline the path that Ryan took. 2. Locate the points of each place he went. 1. Ryan went to the gift shop. What is the ordered pair of points? 2. Ryan went to the Plant Exhibit. What is the ordered pair of points? 3. Ryan went to the Dinosaur Exhibit. What is the ordered pair of points?

n2y news-2-you Volume XXXI, Edition 33 April 18, 2021
REMOVING TRASH FROM SPACE
Trash in Space
A space company named Astroscale launched a new space mission on March 22. They launched this mission to try to solve a problem in space. The problem is trash. Space has a lot of trash including broken satellites. Satellites orbit Earth. Satellites are used to send information to Earth. Satellites are important! Satellites help people listen to radio stations, watch TV stations and more. Satellites help scientists learn about weather on Earth.
Broken e
n2y.com

n2y news-2-you Volume XXXI, Edition 33 April 18, 2021
REMOVING TRASH FROM SPACE
Astroscale is a space company.
Astroscale launched a mission on March 22.
Astroscale

MEET STUDENTS WHERE THEY ARE

Individualized learning in the Total Solution is helping nearly half a million pre-K–transition students nationwide. From daily instruction that’s differentiated to three levels, to completely individualized behavior support, to a weekly newspaper available in four leveled editions, every learner will find the support that’s just right for them.

Sally McCarthy: Math Goal #1 - Scores and Observations
Number Calculator
Objective: When given a model, student will solve word problems involving addition and subtraction with numbers up to 10 with 50% accuracy by 06/01/2021
Assessments: Student Daily Performance Checkpoints
Checkpoint scores displayed below are pre-and post-assessments of skills presented in the Unique Learning System activity with that are associated with the goal.
Advanced Level: Consider extension activities to build higher-level skills and knowledge. Steady skills or knowledge development: General presentation of lesson should provide continued growth. Emerging skills or knowledge intervention: Continue to work on early or pre-requisite skills to support the identified objective.
Mathematics: Subtract to 10. Subtract to 20. Questions 7 & 8
Mathematics: Add two digit numbers. Subtract two digit numbers. Questions 9 & 10

CUSTOMIZE SUPPORT WITH ACCESSIBILITY OPTIONS

It’s easy to meet ESSA’s accessibility standards with text-to-speech, highlighting, and the ability to adjust reading speed. With the Total Solution, Everyone Can Learn®!

unique learning systems
Budget Activity
Name: _____ Month: _____
Income: (money I will get this month) Expenses: Monthly Bills: (money I'm spending on bills) Expenses: Everyday Things: (money I'm spending on everyday things) Savings: (money I'm saving for something big)
Total Income: \$ Total: \$ Total: \$ Total: \$
Money earned (total income) Money for monthly bills (checking account) Money for everyday things (wallet)

SymbolStix PRIME
Morning Schedule
Morning schedule at school. Name: _____
1. put things on desk
2. put backpack in locker
3. sit at desk
Transition Passport

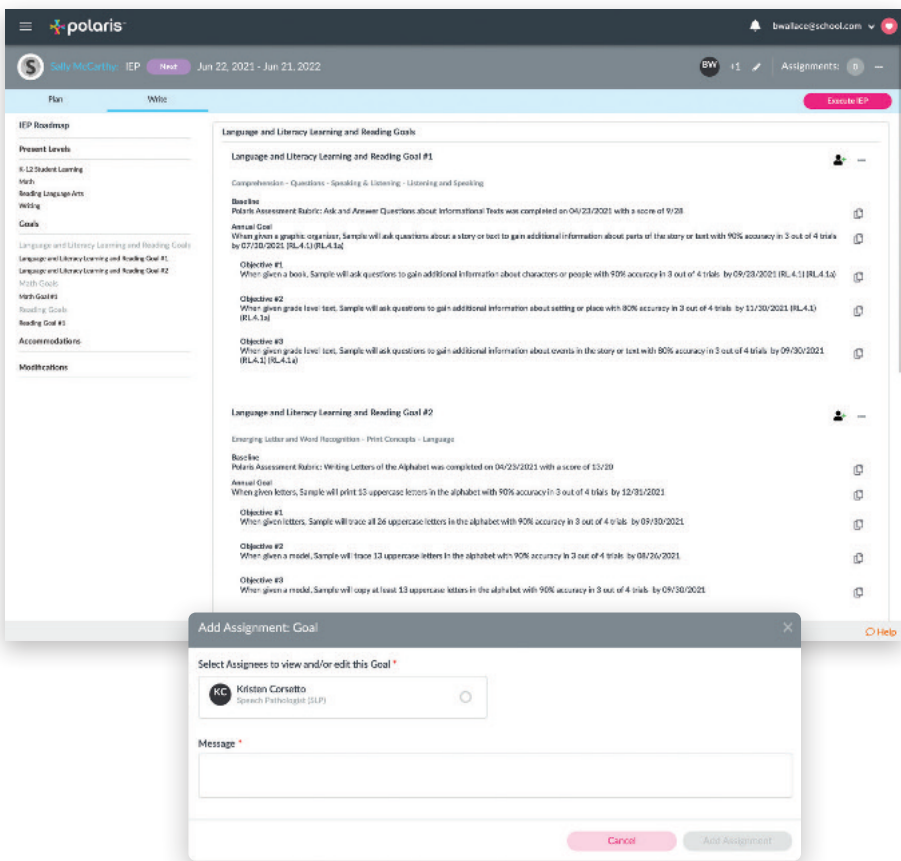
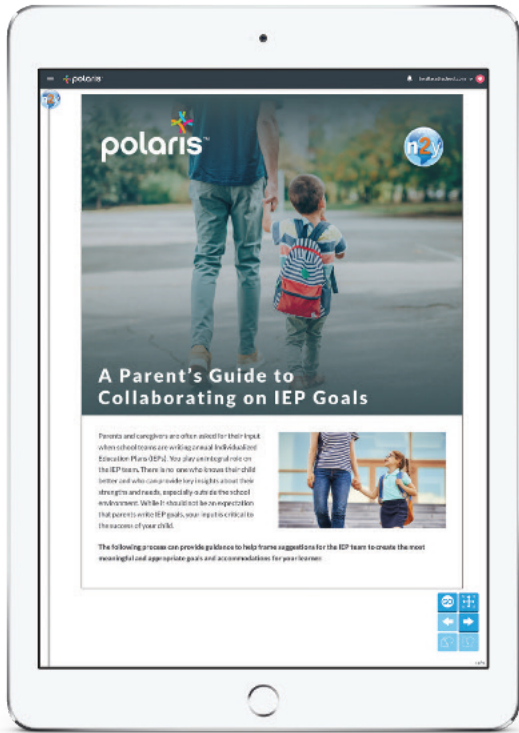
ENCOURAGE STUDENTS TO PURSUE THEIR DREAMS

Guide students down the path to independence with transition planning that begins in pre-K, including creating a personal collection of supporting documents during the transition grade band that will be indispensable for students long after they’ve graduated.

Enhance parent and caregiver

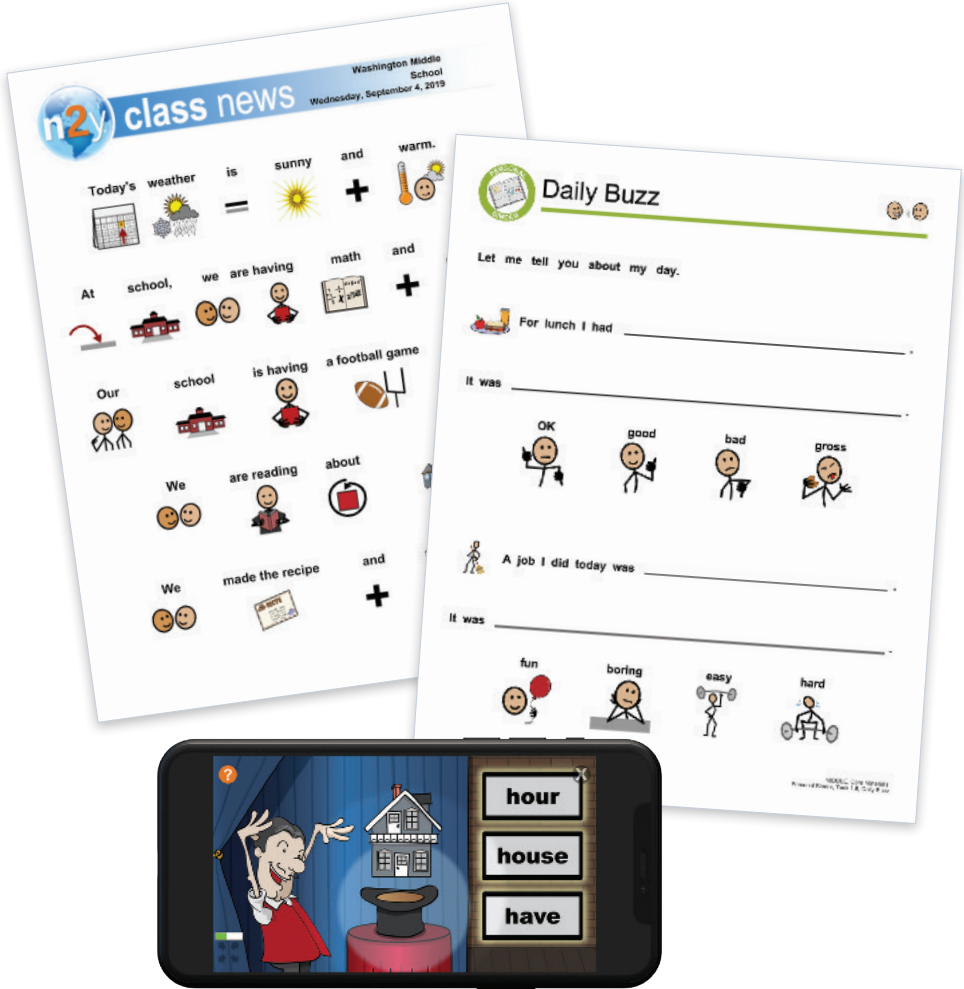
COLLABORATION

Every parent wants to see their child thrive and grow! When parents and caregivers are satisfied, informed, and engaged, students are on meaningful pathways to success.



SHARE MEANINGFUL COMMUNICATION

Giving families an accurate picture of the whole child is easy with the global reporting available within the Total Solution. You can also actively engage parents and caregivers in the IEP process—from goal setting and academic progress to behavior, life skills, and independent functioning—through embedded guidance that’s designed especially for them.



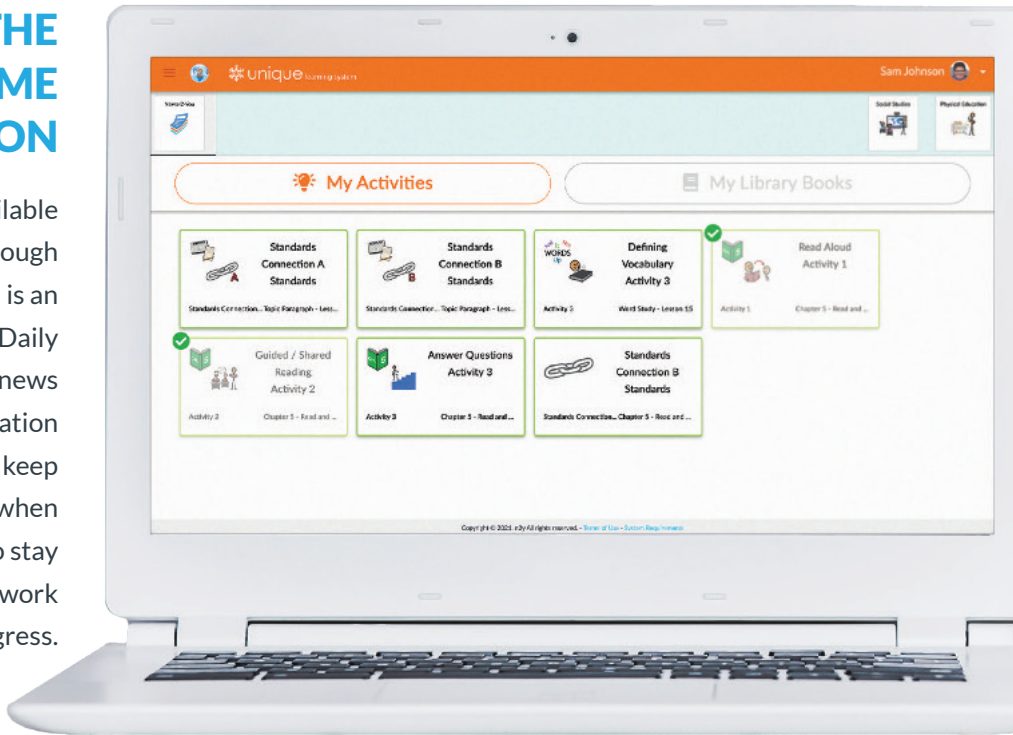
PROMOTE REGULAR INTERACTION

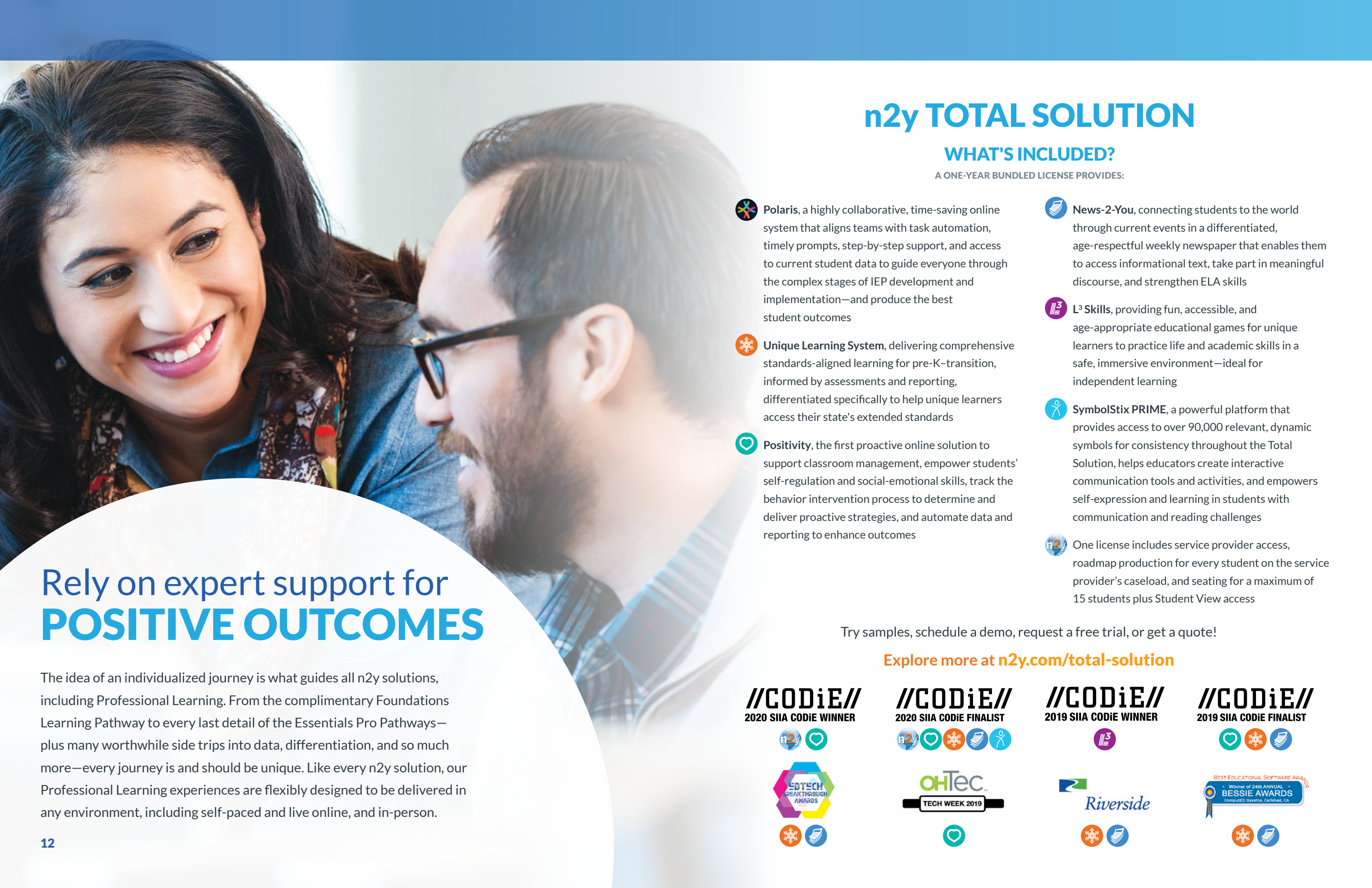
Take advantage of the many interconnected ways to engage with parents and caregivers, from homework options, independent skills practice, communication during IEP progress monitoring, and guidance for applying behavior strategies, to student-created newspapers explaining what has been going on in class!



STRENGTHEN THE SCHOOL-TO-HOME CONNECTION

So much of the Total Solution is available to students logging in remotely through Student View, and all students need is an internet connection and a device. Daily lessons and homework, differentiated news and current events activities, communication boards, and skill-building games keep students learning and moving forward when they are at home, and allow parents to stay connected with their child’s schoolwork and IEP progress.












Rely on expert support for **POSITIVE OUTCOMES**

The idea of an individualized journey is what guides all n2y solutions, including Professional Learning. From the complimentary Foundations Learning Pathway to every last detail of the Essentials Pro Pathways—plus many worthwhile side trips into data, differentiation, and so much more—every journey is and should be unique. Like every n2y solution, our Professional Learning experiences are flexibly designed to be delivered in any environment, including self-paced and live online, and in-person.

n2y TOTAL SOLUTION

WHAT'S INCLUDED?

A ONE-YEAR BUNDLED LICENSE PROVIDES:

-  **Polaris**, a highly collaborative, time-saving online system that aligns teams with task automation, timely prompts, step-by-step support, and access to current student data to guide everyone through the complex stages of IEP development and implementation—and produce the best student outcomes
-  **Unique Learning System**, delivering comprehensive standards-aligned learning for pre-K–transition, informed by assessments and reporting, differentiated specifically to help unique learners access their state's extended standards
-  **Positivity**, the first proactive online solution to support classroom management, empower students' self-regulation and social-emotional skills, track the behavior intervention process to determine and deliver proactive strategies, and automate data and reporting to enhance outcomes
-  **News-2-You**, connecting students to the world through current events in a differentiated, age-respectful weekly newspaper that enables them to access informational text, take part in meaningful discourse, and strengthen ELA skills
-  **L³ Skills**, providing fun, accessible, and age-appropriate educational games for unique learners to practice life and academic skills in a safe, immersive environment—ideal for independent learning
-  **SymbolStix PRIME**, a powerful platform that provides access to over 90,000 relevant, dynamic symbols for consistency throughout the Total Solution, helps educators create interactive communication tools and activities, and empowers self-expression and learning in students with communication and reading challenges
-  One license includes service provider access, roadmap production for every student on the service provider's caseload, and seating for a maximum of 15 students plus Student View access

Try samples, schedule a demo, request a free trial, or get a quote!

Explore more at n2y.com/total-solution

//CODiE//
2020 SIIA CODiE WINNER



//CODiE//
2020 SIIA CODiE FINALIST



//CODiE//
2019 SIIA CODiE WINNER



//CODiE//
2019 SIIA CODiE FINALIST



“At a district level, we are ALL extremely thankful for these products. Now our students can follow one curriculum from early childhood all the way to after graduation without losing any data. Students now have a starting point at the beginning of each school year, and no data is lost when transitioning from elementary to middle, or middle to high school. From a district level, we’re also able to monitor teacher/student usage. In addition, teachers can monitor student growth based on their monthly checkpoint. These programs are GREAT and highly recommended to anyone interested. They will do all the work for you, so teachers only have to worry about teaching.”

Frank Gutierrez

SPECIAL EDUCATION COORDINATOR
UNIFIED INDEPENDENT SCHOOL DISTRICT, TX



Cloud-based **SIMPLICITY.**
Data-driven **EFFICACY.**

n2y's Total Solution connects the entire educator team with integrated tools that empower them to plan, teach, assess, report, and reach students across every in-school or remote setting.

Schedule a demo at n2y.com/demo

EVERYONE Can Learn®
800.697.6575 • n2y.com

Copyright © n2y, LLC. All rights reserved.

