



WHAT IS A SYMBOL?

A carefully designed visuo-graphic representation of language



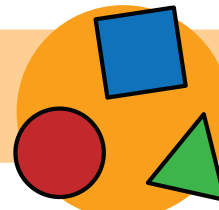
A communication and comprehension tool



WHY USE SYMBOLS?

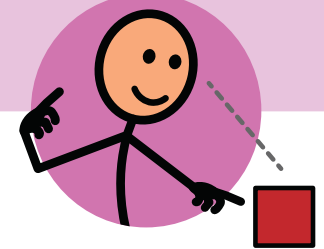
To support communication

To provide visual supports for comprehension



WHEN TO USE SYMBOLS

For symbols to be helpful, students first need to understand their meaning. There are numerous opportunities throughout communication and instruction for symbols to support student access and success!



SYMBOLS IN ACTION

CLASSROOM LEARNING TOOLS

Symbols can be used to assist students to:

- Understand routines and schedules
- Complete the steps of tasks independently
- Learn vocabulary
- Support comprehension
- Improve information recall or word-finding difficulties

If the goal is for your student to read and understand text using just the text, it's best to use something other than symbols in these tasks.

Using symbols with success depends on how educators teach students to use them and scaffold learning with symbol supports in learning tasks.

Using an AAC system to answer a question in class

Support new topic comprehension and vocabulary

A visual timetable

Visual supports for learning the steps to do something independently

AAC SYSTEM

Symbols support participation in communication opportunities:

- Social settings
- Learning activities
- Personal needs and preferences

For students using symbols in an AAC system, ensure the system is always available to support them.

